



Overview

Ideal for AP departments that process more than 1,500 paper documents per month

Competitively priced and **requires little end-user training** and post implementation support

Leverages your enterprise Microsoft SharePoint deployment

Customer Value

Reduce direct and hidden costs associated with managing, finding and storing invoices, packing slips, receipts, POs and other documents

Generate staff productivity and efficiency gains through automated workflows and reporting

Maximize ROI on Microsoft SharePoint investment

Microsoft Partner Network
PARTNER OF THE YEAR

> ENTERPRISE CONTENT MANAGEMENT – 2009 & 2011
> ISV/SOFTWARE SOLUTIONS – 2009

Automating Accounts Payable Processes

Leveraging Your Microsoft SharePoint Platform

KnowledgeLake's Accounts Payable solution is a robust platform that facilitates paper and electronic data capture, workflow automation, search and retrieval, ERP integration, and real-time analytics. Powered by Microsoft SharePoint, the framework accelerates deployment time, enabling organizations to quickly reduce processing costs, improve operational productivity and achieve rapid ROI.

Improve operations.

The KnowledgeLake Accounts Payable solution delivers essential capabilities for accounts payable departments to streamline operations and improve efficiency. Offered as a business solution framework, the solution can be easily configured to fit existing AP workflow processes without disrupting an enterprise's unique business processes.

High volumes? No problem.

AP departments can easily scan and release hundreds of thousands of standard and non-standard documents, regardless of paper size, weight and color, directly into SharePoint. Automated meta tagging and enhanced search capabilities lead to improved customer service, as these functionalities provide employees, including those at branch offices, quick and easy access to AP documents.

Optimize cash flow plans and enhance compliance.

CFOs and controllers are able to leverage real-time metrics to better understand AP liabilities and optimize cash flow plans. With tight document control capabilities, financial departments can enhance compliance with governmental regulations and agencies.

Deep integration with your systems and software.

The solution integrates with nearly all ERP software platforms, including: Microsoft Dynamics CRM, Dynamics GP and Dynamics AX.

This integration facilitates immediate access to all financial documents without navigating away from the ERP system. Additionally, organizations save money on ERP licenses since document approver licenses are not needed within SharePoint.

Reduce costs, automate business processes and maximize ROI.

REDUCE COSTS - Significantly reduce costs of managing and processing invoices, purchase orders, receipts, packing slips and other paper-based documents.

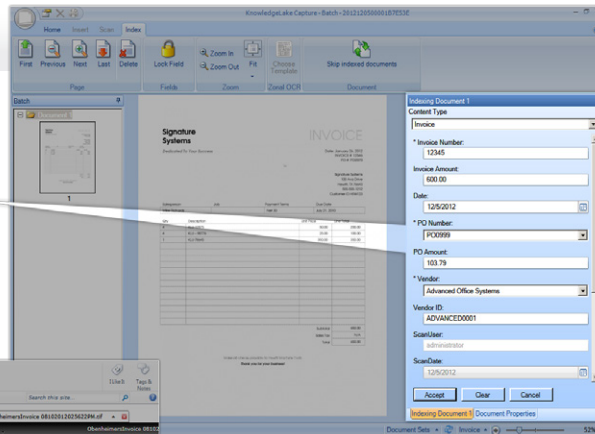
INCREASE PRODUCTIVITY - Take advantage of a powerful and flexible workflow engine to automate repeatable tasks at every stage of the AP business process. Reduce risks and human errors from late payments, double payments and lost payments.

MAXIMIZE ROI FROM SHAREPOINT INVESTMENT - Drive user adoption and increase end-user satisfaction by deploying a cost-effective and low-risk solution that uses proven SharePoint ECM technology. Initial end-user training and ongoing solution support is minimal.

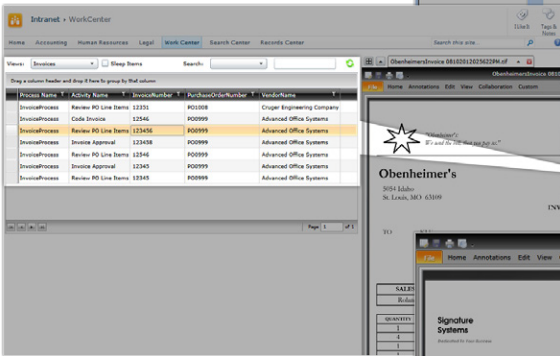
It's simple. Really.

Fast processing

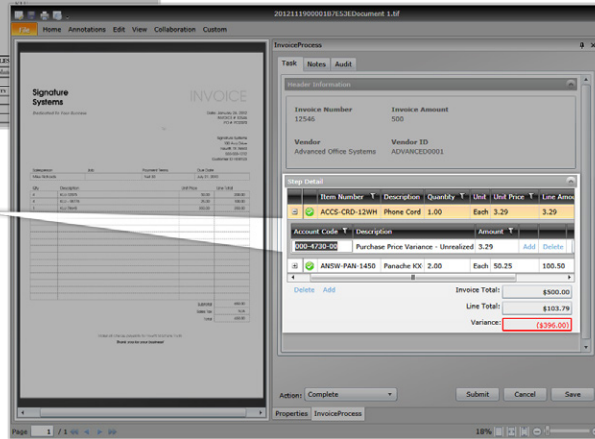
1) Capture, index and release documents to SharePoint.



2) View AP processing activities in the Workflow Inbox, and launch the next interaction.



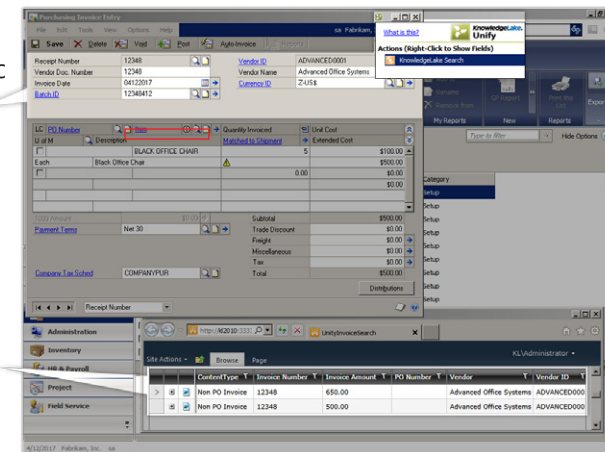
3) Code to general ledger and cost center(s).




One-click retrieval

1) One click search for electronic documents in SharePoint

2) Search results return an interactive grid where users can sort, preview, share and view related documents that are directly tied to the ERP system record(s).



AP Automation for  SharePoint

Technical Highlights

Advanced capture and storage of electronic invoices

Easy document reference, retrieval and archival with comprehensive audit trail

Duplicate invoice detection

Workflow processes for electronic approvals and automated tasks

Robust, personalized end-user experience

Integrates with nearly all ERP platforms, including: Microsoft Dynamics CRM, Microsoft Dynamics GP and Microsoft Dynamics AX

Real-time reporting and metrics

By deploying the Fujitsu and KnowledgeLake solution we now have a simple and robust solution that has reduced the turnaround time for payment by up to six working days. Furthermore our 'supplier paid on time' metric was increased by 16% within the first three months after the system went live.

Maria Nagy, Financial Projects
Nissan Europe Finance

© 2013 KnowledgeLake, Inc. All rights reserved. KnowledgeLake is a registered trademark of KnowledgeLake, Inc. Other product names may be trademarks of their respective companies. v 1516.7.4



Toll-free 888 898 0555 Email sales@knowledgelake.com
 Direct 314 898 0500 Web knowledgelake.com
 Address 6 CityPlace Dr., Suite 600 | Saint Louis, MO 63141

